

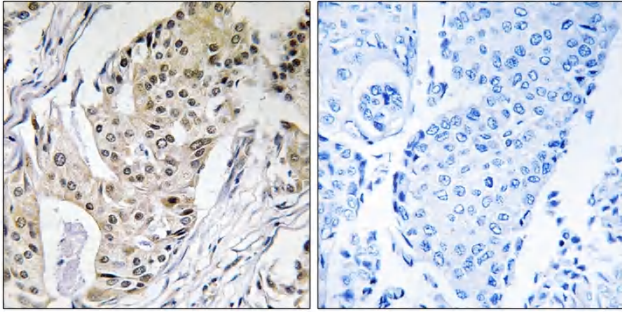


DNA pol ε 4 Polyclonal Antibody

Catalog No	YP-Ab-01659
Isotype	IgG
Reactivity	Human;Mouse
Applications	IHC;IF;ELISA
Gene Name	POLE4
Protein Name	DNA polymerase epsilon subunit 4
Immunogen	The antiserum was produced against synthesized peptide derived from human POLE4. AA range:61-110
Specificity	DNA pol ε 4 Polyclonal Antibody detects endogenous levels of DNA pol ε 4 protein.
Formulation	Liquid in PBS containing 50% glycerol, 0.5% BSA and 0.02% sodium azide.
Source	Polyclonal, Rabbit,IgG
Purification	The antibody was affinity-purified from rabbit antiserum by affinity-chromatography using epitope-specific immunogen.
Dilution	IHC: 1/100 - 1/300. ELISA: 1/40000.. IF 1:50-200
Concentration	1 mg/ml
Purity	≥90%
Storage Stability	-20°C/1 year
Synonyms	POLE4; DNA polymerase epsilon subunit 4; DNA polymerase II subunit 4; DNA polymerase epsilon subunit p12
Observed Band	12kD
Cell Pathway	Nucleus .
Tissue Specificity	Cervix carcinoma, Skin,
Function	catalytic activity:Deoxynucleoside triphosphate + DNA(n) = diphosphate + DNA(n+1).,function:May play a role in allowing polymerase epsilon to carry out its replication and/or repair function.,PTM:Phosphorylated upon DNA damage, probably by ATM or ATR.,subunit:Consists of four subunits: POLE1, POLE2, POLE3 and POLE4. Interacts with POLE3. When bound to POLE3, it can associate with polymerase epsilon p261 and p59 and form a complex.,
Background	POLE4 is a histone-fold protein that interacts with other histone-fold proteins to bind DNA in a sequence-independent manner. These histone-fold protein dimers combine within larger enzymatic complexes for DNA transcription, replication, and packaging.[supplied by OMIM, Apr 2004],
matters needing attention	Avoid repeated freezing and thawing!

**Usage suggestions**

This product can be used in immunological reaction related experiments. For more information, please consult technical personnel.

Products Images

Immunohistochemistry analysis of paraffin-embedded human breast carcinoma tissue, using POLE4 Antibody. The picture on the right is blocked with the synthesized peptide.